

SHADOWPLAY  
*December*



1 FABRIC NO. 7081-75



2 FABRIC NO. 7081-75



3 FABRIC NO. 2297-75



4 FABRIC NO. 2297-75

GONE GREEN  
*January*



1 FABRIC NO. 8090-75



2 FABRIC NO. 8090-75

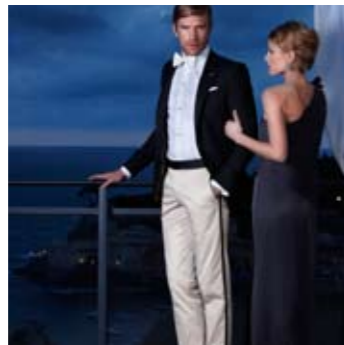


3 FABRIC NO. 8089-23



4 FABRIC NO. 8089-23

EVENING  
*Spring/Summer 2011*

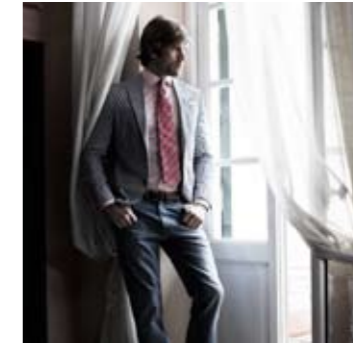


1 FABRIC NO. 0414-00

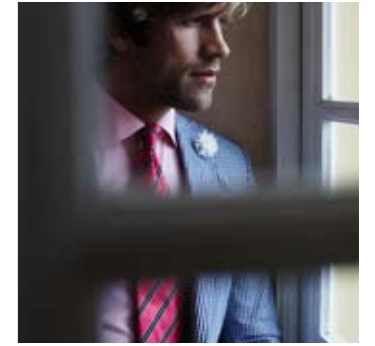


2 FABRIC NO. 0414-00

WATERLOO SUNSET  
*February*



1 FABRIC NO. 6175-51



2 FABRIC NO. 6175-51



3 FABRIC NO. 2230-25



4 FABRIC NO. 2230-25

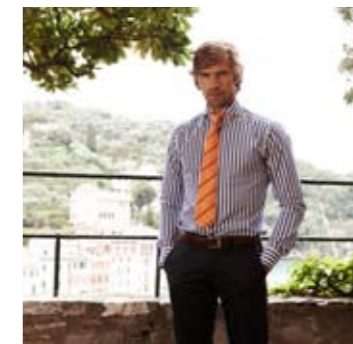
ATMOSPHERE  
*March*



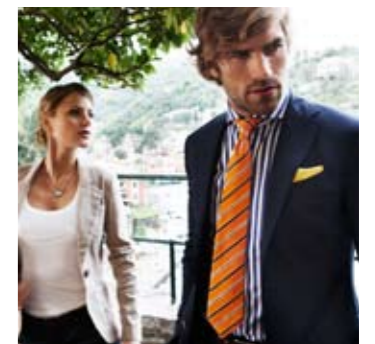
1 FABRIC NO. 2283-25



2 FABRIC NO. 2283-25



3 FABRIC NO. 2280-25



4 FABRIC NO. 2280-25

INFO  
*Ads/Web*

At [etonshirts.com](http://etonshirts.com) you can easily download image material for ads. Just browse the press button in the lower menu. Click on your preferred image and you will start to download a high-res jpg-file.

Eton uses *Adobe Garamond* as official font. The logotype must be placed centered and visible. The Crest is used above headers, always centered.

